

Grade
6

Grand Finale 2024-25

ECAT Question Paper

NEA025

Return the answer sheet along with question paper to the invigilator at the end of the exam.



TOTAL MARKS
100



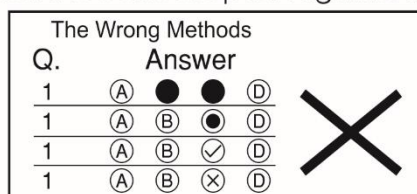
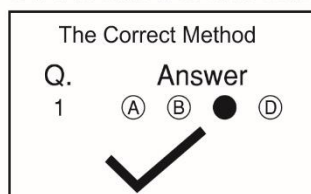
QUESTIONS
50



DURATION
60 mins

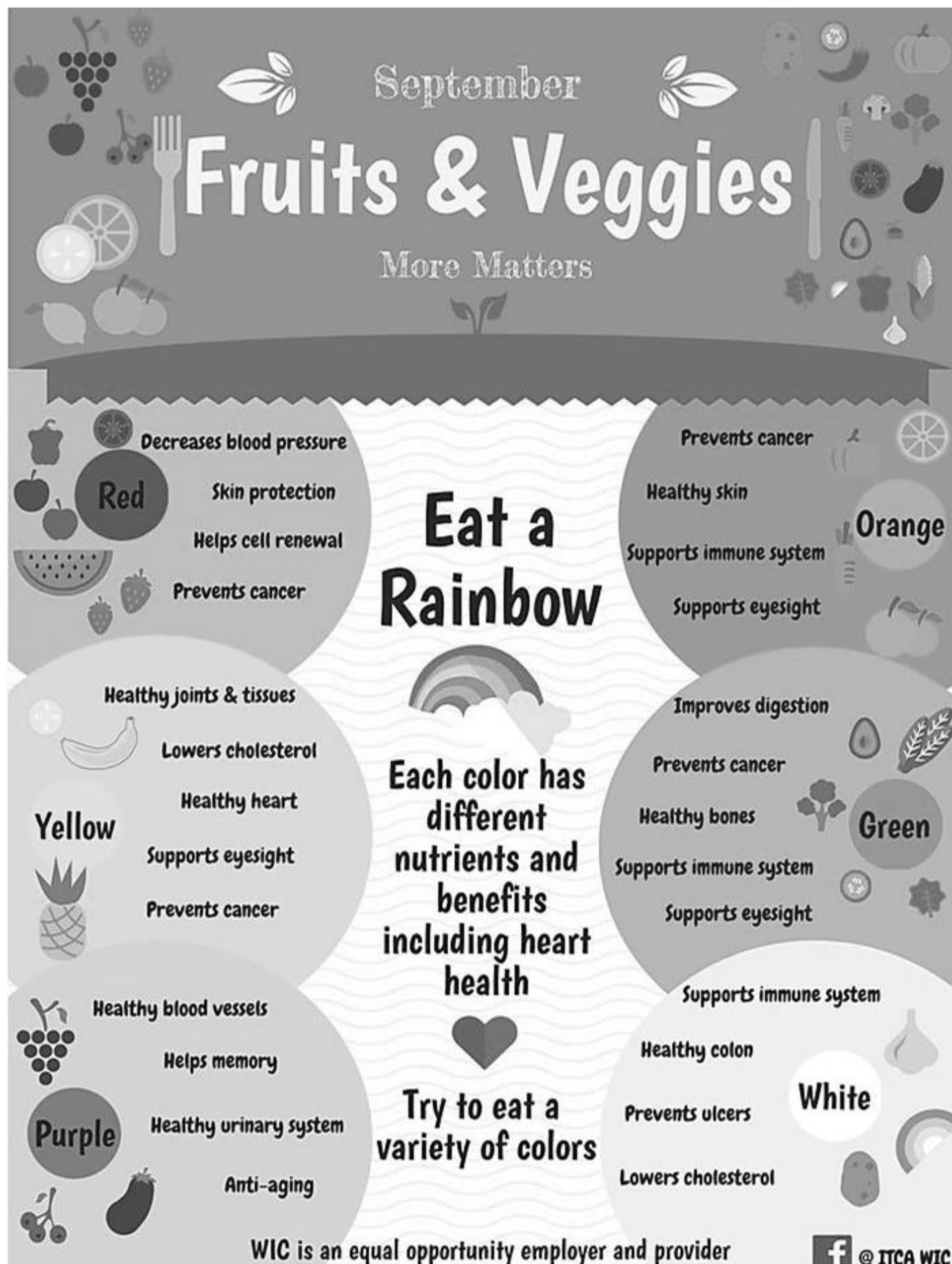
Instructions for Student:

- Read the question carefully before answering.
- Each question has 4 options (A, B, C & D).
- Choose one correct option as your answer, from the 4 options.
- Every question carries 2 marks.
- There will be an additional 0.5 Negative Marking for every wrong answer.
- On the answer sheet blacken the correct option against the corresponding question number,



- Use pencil to mark your answer.
- If you wish to change your answer, erase the previous mark completely.

Observe the 'POSTER' and answer questions 1 to 5.



1. What is the poster about?

- a. How rainbows are formed
- b. How to get younger
- c. Benefits of eating a variety of fruits and veggies
- d. Colours of a rainbow

2. What kind of foods will give you a healthy urinary system?

- a. Dairy items
- b. Fruits and veggies that are purple in colour
- c. Fruits like banana
- d. Starchy foods like potatoes

3. Which colour of fruits and vegetables is typically associated with promoting heart health?

- a. red
- b. blue
- c. yellow
- d. green

4. Which of the following foods is NOT typically considered part of the "green" category?

- a. Spinach
- b. Broccoli
- c. Green apples
- d. Blueberries

5. What is a common benefit of eating orange and yellow fruits and vegetables?

- a. They help improve eyesight
- b. They provide iron.
- c. They are high in protein.
- d. They help with digestion.

Read the passage and answer questions 6 to 12.

Binya liked being on her own, and sometimes she allowed the cows to lead her into some distant valley, and then they would all be late coming home. The cows preferred having Binya with them, because she let them wander. Bijju pulled them by their tails if they went too far.

Binya belonged to the mountains, to this part of the Himalayas known as Garhwal. Dark forests and lonely hilltops held no terrors for her. It was only when she was in the market town, jostled by the crowds in the bazaar, that she felt rather nervous and lost. The town, five miles from the village, was also a pleasure resort for tourists from all over India.

Binya was probably ten. She may have been nine or even eleven, she couldn't be sure because no one in the village kept birthdays; but her mother told her she'd been born during a winter when the snow had come up to the windows, and that was just over ten years ago, wasn't it? Two years later her father had died; but his passing had made no difference to their way of life. They had three tiny terraced fields on the side of the mountain, and they grew potatoes, onions, ginger, beans, mustard and maize: not enough to sell in the town, but enough to live on.

- Excerpt from 'The Blue Umbrella' by Ruskin Bond

6. How does Binya feel when she is in the market town?

- a. excited and happy
- b. nervous and lost
- c. confident and secure
- d. sad and depressed

7. What does Binya enjoy doing with the cows?

- a. Pull them by their tails
- b. Leading them into distant valleys
- c. Training them for competitions
- d. Keeping them in a pen

- 8. What can you say about Binya's character through her interactions with the cows?**
- a. She is strict and controlling.
 - b. She is afraid of them.
 - c. She ignores them completely.
 - d. She is caring and allows them to wander.
- 9. Based on the passage, what can be inferred about Binya's familiarity with her surroundings?**
- a. She feels at home in the mountains.
 - b. She is afraid of the dark forests.
 - c. She prefers the market over the mountains.
 - d. She often gets lost in the hills.
- 10. What information does the passage give us about Binya's age?**
- a. She is exactly ten years old.
 - b. She just turned eleven.
 - c. She feels older than her actual age.
 - d. She is uncertain of her exact age but knows she is over ten.
- 11. Which of the following best describes Binya's life after her father's death?**
- a. It became more difficult, and they struggled to survive.
 - b. There was no significant change in their way of life.
 - c. They moved to a different village.
 - d. They became wealthy from selling crops.
- 12. What is the main theme of the excerpt about Binya's life in the Himalayas?**
- a. The importance of material possessions
 - b. The challenges of living in a crowded town
 - c. The significance of celebrating birthdays
 - d. The connection between humans and nature

Read the given information and answer questions 13 to 20.

Garhwal is a beautiful region located in the northern part of India, nestled in the majestic Himalayas. It is part of the state of Uttarakhand and is known for its stunning landscapes, rich culture, and vibrant communities. Let's explore some key features of Garhwal that make it a unique and fascinating place.

Garhwal is characterised by its towering mountains, lush green valleys, and sparkling rivers. The region is home to several important rivers, including the Ganges, which originates from the nearby glaciers. The breathtaking scenery includes snow-capped peaks, dense forests, and terraced fields that create a picturesque environment. Many tourists visit Garhwal to enjoy trekking, hiking, and exploring its natural wonders.

The people of Garhwal are known as Garhwalis, and they have a rich cultural heritage. They primarily speak the Garhwali language and celebrate various festivals that reflect their traditions and values. The local communities are close-knit, often consisting of small villages where everyone knows each other. The villagers are known for their hospitality and warmth towards visitors.

- 13. What is Garhwal known for?**
- a. Its deserts and hot climate
 - b. Its busy urban life
 - c. Its stunning landscapes and rich culture
 - d. Its flat plains and agriculture

14. Which river is mentioned as originating from the glaciers near Garhwal?

- a. Ganges b. Brahmaputra c. Yamuna d. Indus

15. What language do the people of Garhwal primarily speak?

- a. Hindi b. Garhwali c. English d. Punjabi

15. Why do many tourists visit Garhwal?

- a. To experience shopping in the markets
b. To visit historical museums
c. To attend educational conferences
d. To enjoy trekking, hiking, and exploring nature

17. What can be inferred about the community in Garhwal?

- a. They are known for their hospitality and close-knit relationships.
b. They prefer to live in large cities.
c. They do not celebrate any festivals.
d. They primarily focus on technology.

18. How might the natural beauty of Garhwal influence the local economy?

- a. It may lead to fewer job opportunities in agriculture.
b. It could attract tourists, increasing income from tourism-related activities.
c. It might cause people to leave the region for urban areas.
d. It could result in the destruction of local wildlife habitats.

19. In the passage, the phrase "close-knit communities" refers to.

- a. Communities that are physically close to each other in distance.
b. Communities where people are connected and support one another.
c. Communities that are small in size and have few members.
d. Communities that are isolated and do not interact with others.

20. What is the main idea of the passage about Garhwal?

- a. Garhwal is a popular tourist destination with a rich cultural heritage and beautiful landscapes.
b. Garhwal is a remote area with no access to modern facilities.
c. The weather in Garhwal is always cold and snowy.
d. The people of Garhwal do not engage in agriculture.

Read the given poem and answer questions 21 to 25.

The Mountains of Life

The mountains are majestic

Full of beauty and grace

When we approach the mountain

We feel peace in this place.

A storm brewing in the mountains

Can be a scary place

But when the sun shines on the mountain

We love this beautiful place.

Our lives can feel like a mountain
When things are good we sing
But when the challenges of life appear
We shutter at our feelings.

- By Catherine Pulsifier

21. What does the phrase "the mountains are majestic" suggest about the mountains?

- a. They are small and unimportant.
- b. They are difficult to climb.
- c. They are large, impressive, and beautiful.
- d. They are covered in snow all year round.

22. In the line "When the sun shines on the mountain," what literary device is being used?

- a. personification b. simile c. hyperbole d. metaphor

23. What is the meaning of the line "Our lives can feel like a mountain"?

- a. Mountains are dangerous places to be
- b. Life is only about challenges.
- c. Life has ups and downs, similar to climbing a mountain.
- d. Life is always easy and fun.

24. What does the storm in the mountains symbolise in this poem?

- a. Calmness and serenity b. Joy and celebration
- c. Fear and uncertainty d. The beauty of nature

25. Which of the following lines evokes a feeling of danger?

- a. A storm brewing in the mountains
- b. When we approach the mountain
- c. The mountains are majestic
- d. But when the sun shines on the mountain

For questions 26 to 50, choose the correct alternative.

26. "The cat jumped _____ the table and knocked _____ a glass."

Choose the correct prepositions to complete the sentence.

- a. above, over b. above, below
- c. on, over d. on, above

27. "She wants to become _____ engineer when she grows up."

Choose the correct article.

- a. the b. an c. a d. no article needed

28. "I will finish my homework," said Ravi.

Convert the following sentence into indirect speech.

- a. Ravi said that he would finish his homework.
- b. Ravi said that he finished his homework.
- c. Ravi said that he will finish his homework.
- d. Ravi told that he will finish his homework.

29. "She loves to read, _____?" Choose the correct question tag.
a. does she b. doesn't she c. is she d. isn't she
30. "She _____ finished her homework well before dinner, allowing her time to relax and prepare for the evening." Choose the correct adverb to complete the sentence.
a. efficiently b. efficient c. efficiency d. efficiencies
31. "I had planned to take a leisurely walk; _____, the sudden downpour spoiled my plans." Choose the correct conjunction to complete the sentence.
a. so b. where c. if d. however
32. Out of all the students in the class, Andy is the _____.
a. smarter one b. smart one c. smartest d. smarter
33. Which of the following words can be formed by rearranging all the letters of the word "LISTEN"?
a. TINSEL b. DAMSEL c. LIASON d. LIASE
34. Which of the following words can be formed by rearranging all the letters of the word "CINEMA"?
a. ACNE b. ICEMAN c. MINCE d. CANINE
35. Choose the incorrectly spelt word.
a. Accommodate b. Definatly c. Embarrass d. Occurrence
36. Identify the sentence that uses the present perfect tense.
a. I had finished my homework before dinner
b. They will have completed the project by next week
c. He was playing soccer when it started to rain
d. She has visited Paris three times
37. Which of the following sentences does NOT contain adjective/s?
a. The player scored a goal during the last few minutes of the game.
b. She swiftly ran to the store.
c. The towering building stands majestically against the skyline
d. He sings with remarkable skill and passion
38. Which of the following sentences contains a pronoun?
a. They are planning a surprise party for her.
b. The flowers in the garden are beautiful.
c. Jessica's family went to the movies.
d. The dog ran across the yard.
39. "My sister Eva _____ design the logo for your business cards." (possibility)
Use the correct modal auxiliary to complete the sentence.
a. can b. might c. must d. should
40. Which of the following sentences contains BOTH an abstract and a collective noun?
a. The team celebrated their victory with a party.
b. Happiness is essential for a fulfilling life.
c. The beauty of nature inspires many artists.
d. Her kindness towards others is admirable.

41. Which sentence correctly uses the comparative degree of the adjective?

- a. He runs fastly compared to his friends.
- b. This book is gooder than that one.
- c. She is the smartest student in the class.
- d. This puzzle is more difficult than I expected.

42. The karate class will meet promptly at three. What is the tense of the verb?

- a. Simple past
- b. simple present
- c. past continuous
- d. simple future

43. Choose the word that is least like the others.

- a. rose
- b. oak
- c. tulip
- d. daisy

44. "The teacher's explanation was so lucid that everyone understood the complex topic."

Choose the word that is closest in meaning to the underlined word in the sentence.

- a. confusing
- b. lengthy
- c. clear
- d. boring

45. What does the idiom "break the ice" mean?

- a. To start a conversation in a tense situation
- b. To physically break something made of ice
- c. To end a friendship
- d. To make a difficult situation worse

46. "The teacher was very enthusiastic about the new project."

Choose the word that is a synonym for the underlined word in the sentence.

- a. indifferent
- b. bored
- c. frustrated
- d. excited

For questions 47 to 50, choose the correct punctuation.

The teacher asked the students, "Have you completed your homework(47)" She reminded them that it was due tomorrow. Some students replied, (48)Yes, we finished it," while others said(49) "No, we need more time." Suddenly, one student shouted, "I forgot about it(50)"

47. a. comma (,)

b. full stop (.)

c. question mark (?)

d. exclamation mark (!)

48. a. quotation marks ("")

b. comma (,)

c. colon (.)

d. exclamation mark (!)

49. a. comma (,)

b. full stop (.)

c. question mark (?)

d. exclamation mark (!)

50. a. comma (,)

b. full stop (.)

c. question mark (?)

d. exclamation mark (!)

