

Grade  
**4**

**Grand Finale 2024-25**

**S-CAT Question Paper**

**NSA025**

Return the answer sheet along with question paper to the invigilator at the end of the exam.



TOTAL MARKS  
**100**



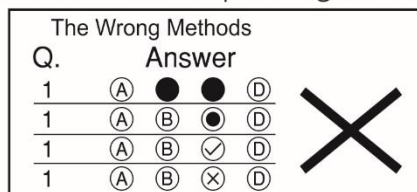
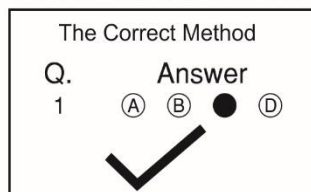
QUESTIONS  
**50**



DURATION  
**60 mins**

### Instructions for Student:

- Read the question carefully before answering.
- Each question has 4 options (A, B, C & D).
- Choose one correct option as your answer, from the 4 options.
- Every question carries 2 marks.
- There will be an additional 0.5 Negative Marking for every wrong answer.
- On the answer sheet blacken the correct option against the corresponding question number,

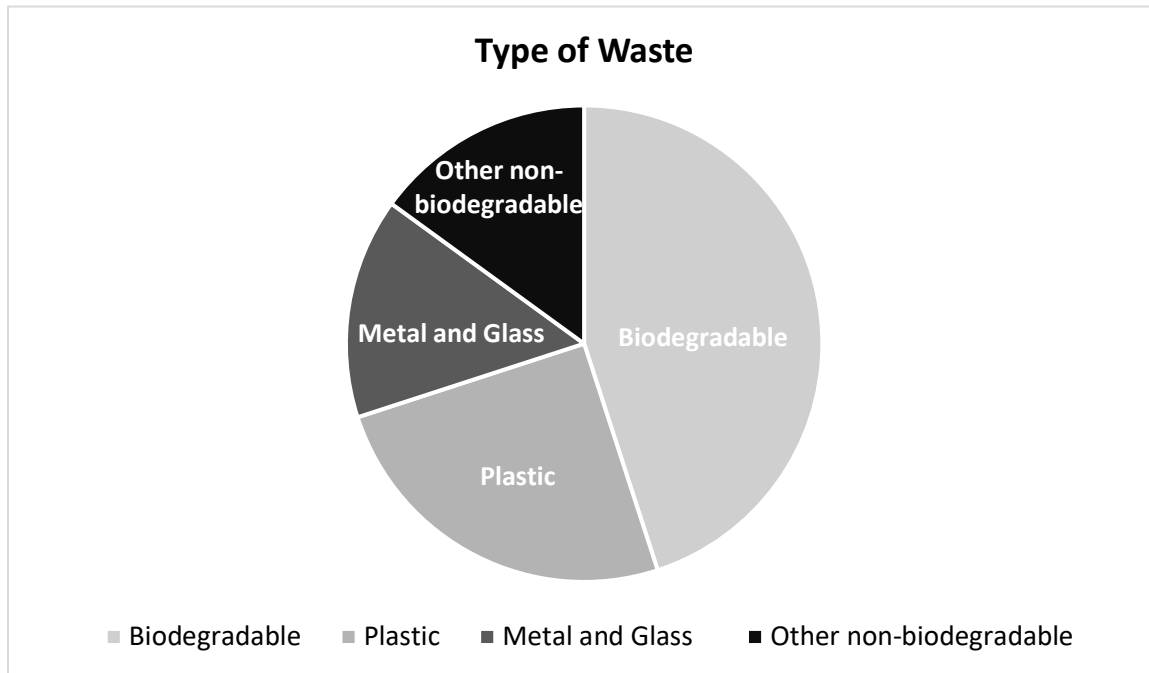


- Use pencil to mark your answer.
- If you wish to change your answer, erase the previous mark completely.

- 1. Choose the option that is INCORRECT.**
  - a. Carbohydrates give energy to run, jump, and play.
  - b. Proteins help us grow tall and strong.
  - c. Vitamins and minerals help our body to fight diseases and protect us from falling sick.
  - d. Fats protect us from diseases.
- 2. What happens to undigested food in the digestive system?**
  - a. It is stored in the liver.
  - b. It is absorbed into the blood.
  - c. It is removed as waste through the anus.
  - d. It is converted into energy.
- 3. What is the primary function of roots in plants?**
  - a. Capture sunlight
  - b. Anchor the plant and absorb water
  - c. Help in photosynthesis
  - d. Produce flowers
- 4. Which of the following is a biodegradable material?**
  - a. Plastic bags
  - b. Banana peels
  - c. Glass bottles
  - d. Aluminum cans
- 5. Which organ filters blood to produce urine?**
  - a. Lungs
  - b. Kidney
  - c. Liver
  - d. Bladder
- 6. Neena needs to draw water from a well. Which simple machine would be the most useful for lifting a heavy bucket from the well?**
  - a. Wedge
  - b. Lever
  - c. Pulley
  - d. Screw
- 7. Which of the following is a major cause of air pollution?**
  - a. Planting trees
  - b. Burning fossil fuels
  - c. Recycling waste
  - d. Using solar panels

Read the chart to solve questions 8 & 9.

The chart below shows the types of waste generated in a city over a year:



8. Which category of waste is the largest contributor in waste?
- Plastic
  - Biodegradable
  - Metal and Glass
  - Other Non-Biodegradable
9. If 100 tons of waste is generated, how much of it is plastic?
- 15 tons
  - 25 tons
  - 45 tons
  - 50 tons
10. What is the process by which water changes from a liquid to a gas?
- Condensation
  - Evaporation
  - Precipitation
  - Freezing
11. A child suffers from weak bones and frequent leg pain. Which of the following meals would you recommend?
- Rice and dal with apple juice
  - Milk, cheese, leafy vegetables, and fish
  - Bread, jam, and butter
  - Pizza, soda, and fries
12. Which of these actions would harm plants the most?
- Watering them in the morning
  - Exposing them to direct sunlight
  - Removing their roots
  - Adding compost to the soil
13. What is the standard unit for measuring body temperature?
- Meters (m)
  - Degrees Celsius (°C)
  - Litres (L)
  - Kilograms (kg)

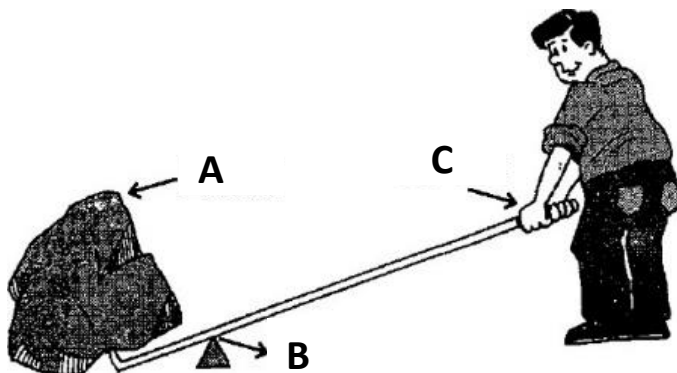
**14. Ritu must design an experiment to demonstrate that plants lose water through their leaves. Which of the following materials must she use?**

- a. A candle, a pot, and soil
- b. A polythene bag, a plant branch, and sunlight
- c. A thermometer, a glass of water, and a leaf
- d. A ruler, a seed, and sand

**15. What causes a shadow to form?**

- a. Reflection of light
- b. Refraction of light
- c. An opaque object blocking light
- d. A transparent object bending light

**16. Observe the picture and choose the option that shows correct labelling.**



- a. A-Fulcrum, B-Load, C-Effort
- b. A-Load, B-Fulcrum, C-Effort
- c. A-Effort, B-Fulcrum, C-Load
- d. A-Load, B-Effort, C- Fulcrum

**17. Which of these actions can help reduce air pollution and support plant life?**

- a. Cutting down more trees
- b. Using renewable energy sources
- c. Burning fossil fuels for heating
- d. Expanding urban areas into forests

**18. The process of losing water in the form of water vapour from the leaves is called \_\_\_\_\_**

- a. Photosynthesis
- b. Respiration
- c. Evaporation
- d. Transpiration

**19. If someone suffers from a sprain, what first aid step should you take?**

- a. Apply heat immediately
- b. Wrap the area tightly with a bandage
- c. Apply an ice pack to reduce swelling
- d. Massage the injured area

**20. A plant grows in a region with very little water. Which of these features is it most likely to have?**

- a. Broad, flat leaves
- b. Thick, waxy stems
- c. Bright flowers for pollination
- d. Weak, shallow roots

**21. Given below are two statements. Read them and choose the correct option:**

- i. The Sun is the primary source of energy for the water cycle.
  - ii. Precipitation occurs when water changes from a liquid to a gas.
- a. Both i and ii are true
  - b. Only i is true
  - c. Only ii is true
  - d. Both i and ii are false

**22. A bird with webbed feet and waterproof feathers lives near a lake. Which of these can you conclude about its habitat?**

- a. It lives in a desert.
- b. It is adapted to aquatic environments.
- c. It migrates to the mountains during winter.
- d. It uses its feet to climb trees.

**23. Which of the following safety rules should be followed while crossing the road?**

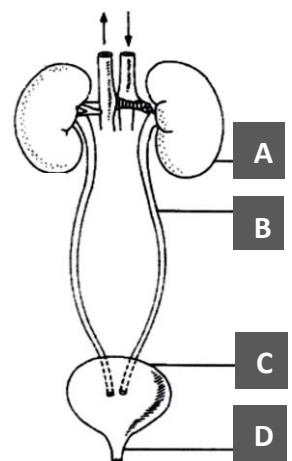
- a. Cross anywhere you like.
- b. Look both ways and use a zebra crossing.
- c. Walk in the middle of the road.
- d. Run quickly across the road.

**24. A person suffers from diarrhoea after eating contaminated food. Which part of the digestive system is most affected?**

- a. Mouth
- b. Stomach
- c. Kidney
- d. Large intestine

**25. Observe the picture and choose the correct option.**

- a. A- Kidney, B- Ureter, C- Urethra, D-Urinary bladder
- b. A- Urinary bladder, B- Ureter, C- Urethra, D- Kidney
- c. A-Kidney, B- Urinary bladder, C- Urethra, D- Ureter
- d. A-Kidney, B- Ureter, C-Urinary bladder, D- Urethra



**26. Which of these define water pollution?**

- a. Increase in oxygen levels in water
- b. Presence of harmful substances in water bodies
- c. Reduction in the temperature of water bodies
- d. Purification of water using chemicals

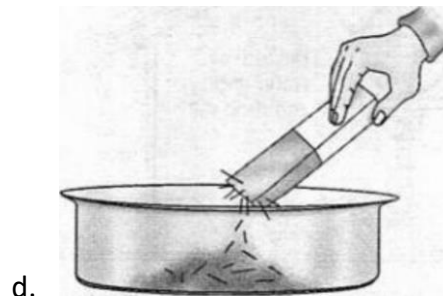
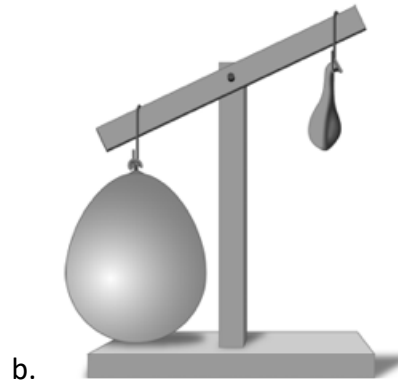
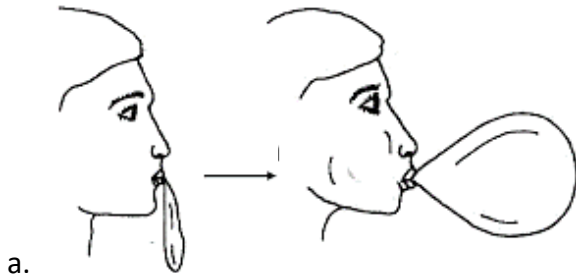
**27. What is the primary function of the digestive system?**

- a. To remove waste from the body
- b. To break down food into simpler forms
- c. To absorb oxygen from the environment
- d. To transport nutrients through the blood

**28. Why should we drink plenty of water every day?**

- a. To avoid sweating
- b. To help kidneys filter waste effectively
- c. To stop urine production
- d. To reduce the need for food

29. Which of the following experimental set ups demonstrate that air occupies space.

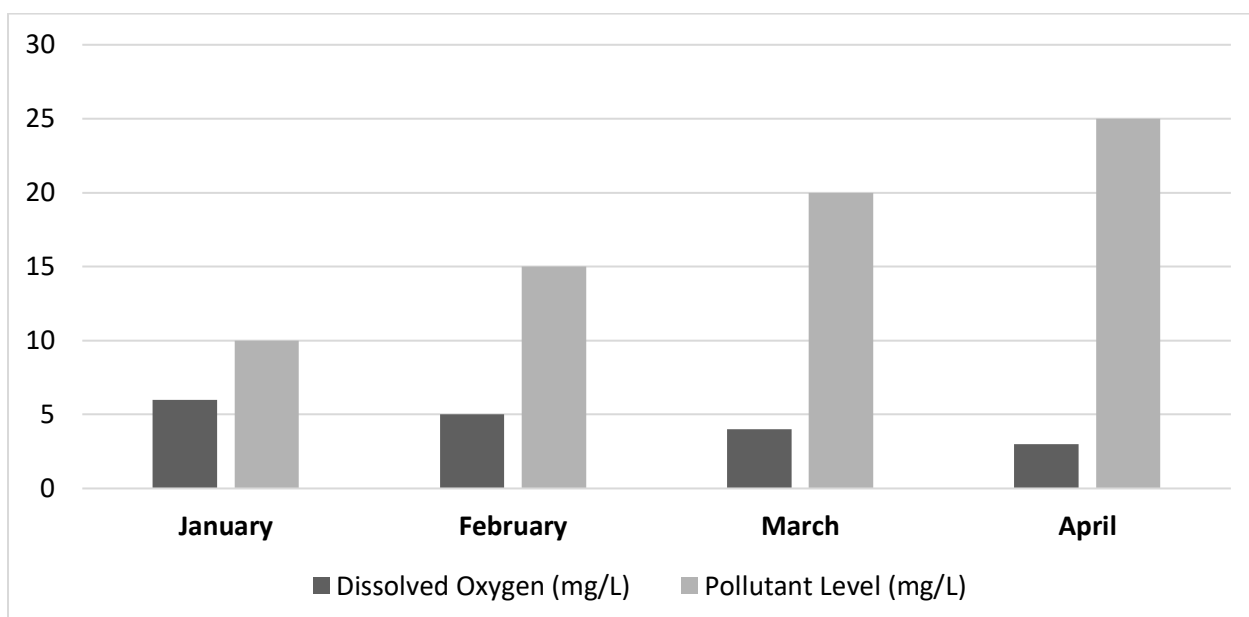


30. What is adaptation?

- A process where plants grow taller.
- Special features that help living things survive in their habitats.
- The way animals migrate to other places.
- The process of photosynthesis in plants.

The following table shows the levels of pollutants in a river over four months.

Based on the information, answer Q31& 32.



**31. In which month, the river experienced the highest level of pollution?**

- a. January
- b. February
- c. March
- d. April

**32. Choose the statement that can be concluded based on the data.**

- a. Dissolved oxygen stays the same with the increase in pollutants.
- b. Dissolved oxygen increases as pollutants increase.
- c. Dissolved oxygen decreases as pollutants increase.
- d. Pollutants do not affect dissolved oxygen.

**33. A city experiences high levels of noise pollution due to increased vehicle traffic. What is the most likely long-term impact on people who live there?**

- a. Improved hearing ability
- b. Reduced sleep and stress levels
- c. Hearing loss and health issues
- d. Improved air quality

**34. Which of the following statements best explains the role of greenhouse gases?**

- a. They absorb heat from the sun, keeping Earth warm.
- b. They release oxygen for humans to breathe.
- c. They prevent water vapour from forming clouds.
- d. They help reduce global warming.

**35. Given below are two statements. Read them and choose the correct option:**

- i. Length is measured in litres.
- ii. A ruler is used to measure short distances.

- a. Both i and ii are true
- b. Only i is true
- c. Only ii is true
- d. Both i and ii are false

**36. Which of the following is true about all simple machines?**

- a. They need electricity to work.
- b. They make work harder.
- c. They make work easier by changing the force or its direction.
- d. They never move.

**37. A pencil is 15 centimetres long. How many millimetres is that?**

- a. 150 mm
- b. 15 mm
- c. 1.5 mm
- d. 1500 mm

**38. If a glass of cold water develops droplets on the outside, what process has occurred?**

- a. Evaporation
- b. Condensation
- c. Freezing
- d. Precipitation

**39. Which gas in the atmosphere is essential for respiration in plants, humans and animals?**

- a. Carbon dioxide
- b. Oxygen
- c. Nitrogen
- d. Argon

**40. Given below are two statements. Read them and choose the correct option:**

- i. One kilometre is equal to 1000 metres.
- ii. One kilogram is equal to 1000 grams.

- a. Both i and ii are true.
- b. Only i is true.
- c. Only ii is true.
- d. Both i and ii are false.

**41. What is the first step in administering first aid for a minor cut?**

- a. Cover the wound with a cloth.
- b. Wash the wound with clean water.
- c. Apply a bandage without cleaning.
- d. Ignore the wound.

**42. Which of these examples shows how reflection works?**

- a. Looking at your face in a mirror
- b. A shadow on the wall
- c. Light bending in water
- d. Light passing through a glass window

**43. Which of these factors is most directly responsible for changes in weather?**

- a. Air pollution
- b. Rotation of the Earth
- c. The Sun's heat
- d. The size of the clouds

**44. How does a fish breathe underwater?**

- a. With lungs
- b. With fins
- c. With flippers
- d. With gills

**45. Which of these is NOT a contact force?**

- a. Push
- b. Pull
- c. Gravitational force
- d. Friction

**46. Which of these organs work alongside the main excretory system to help remove waste?**

- a. Stomach
- b. Intestine
- c. Skin
- d. Kidney

**47. Which simple machine would you use to split a piece of wood?**

- a. Pulley
- b. Lever
- c. Wedge
- d. Screw

**48. Which property of water allows us to see underwater creatures and objects?**

- a. Transparency
- b. Density
- c. Solubility
- d. Opacity

**49. Neha has poor eyesight and struggles to see in the dark. Which nutrient might she be deficient in?**

- a. Vitamin A
- b. Vitamin C
- c. Calcium
- d. Iron

**50. A student shines a torch on an object and sees a dark shape on the wall behind it. What does this show?**

- a. Light bends around the object.
- b. Light passes through the object.
- c. The object blocks light and makes a shadow.
- d. Light is absorbed by the object.

