

Grade
3

Grand Finale 2024-25

S-CAT Question Paper

NSA025

Return the answer sheet along with question paper to the invigilator at the end of the exam.



TOTAL MARKS
80



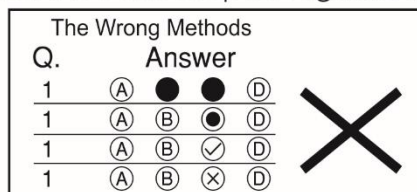
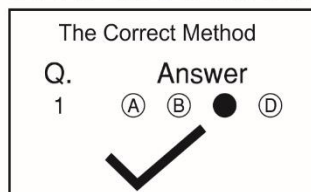
QUESTIONS
40



DURATION
60 mins

Instructions for Student:

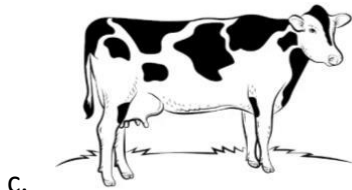
- Read the question carefully before answering.
- Each question has 4 options (A, B, C & D).
- Choose one correct option as your answer, from the 4 options.
- Every question carries 2 marks.
- There will be an additional 0.5 Negative Marking for every wrong answer.
- On the answer sheet blacken the correct option against the corresponding question number,



- Use pencil to mark your answer.
- If you wish to change your answer, erase the previous mark completely.

1. What must you do to maintain a healthy excretory system?

- a. Eat salty snacks daily.
- b. Drink plenty of water and stay active.
- c. Hold urine for long periods.
- d. Consume junk food regularly.

2. Choose the odd one out.**3. A plant is kept inside a closed jar with no air supply. It dies after 3 days. Why does it happen?**

- a. Plants need nitrogen to survive.
- b. Plants need carbon dioxide to survive.
- c. Plants need sunlight, not air.
- d. Plants cannot survive in water.

4. Which gas in the air is needed for breathing?

- a. Carbon dioxide
- b. Nitrogen
- c. Oxygen
- d. Hydrogen

5. Which body part of an insect contains the antennae?

- a. Thorax
- b. Head
- c. Abdomen
- d. Wings

6. Read the data below and answer the question.

- **Object A: Needs food and water, breathes, reproduces.**
- **Object B: Does not need food, does not grow, cannot breathe.**

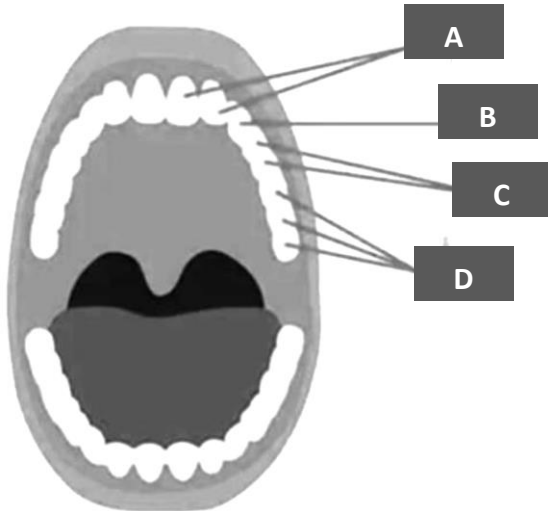
What conclusion can you draw?

- a. Both A and B are living things.
- b. Both A and B are non-living things.
- c. Object A is living, and Object B is non-living.
- d. Object B is living, and Object A is non-living.

7. Which of these is NOT correct?

- a. Beaks- for eating and feeding baby birds
- b. Tail-to maintain balance during flight
- c. Feathers- to help fly and perch
- d. Claws-to hold things and grip branches

8. Choose the correct option.



- a. A-Incisor, B-Molar, C-Premolar, D-Canines
- b. A-Molar, B-Premolar, C-Canine, D-Incisor
- c. A-Incisor, B-Premolar, C-Canine, D- Molar
- d. A-Incisor, B- Canine, C-Premolar, D- Molar

9. Why is it important to eat a balanced diet that includes all nutrients?

- a. To avoid eating too much
- b. To prevent diseases and stay healthy
- c. To gain weight quickly
- d. To avoid drinking water

10. If there is a fire in the kitchen, what would you do?

- a. Throw oil on the fire without thinking.
- b. Use a fire extinguisher or inform an adult immediately.
- c. Run outside without alerting anyone.
- d. Try to put out the fire with your hands.

11. A student leaves two bowls of water: one in the sun and the other in the shade. The water in the sun evaporates faster. What can you conclude from this experiment?

- a. Water evaporates faster in the shade.
- b. Evaporation occurs only in sunlight.
- c. Heat increases the rate of evaporation.
- d. Water does not evaporate in the shade.

12. A stick is 120 centimetres long. How many metres is it?

- a. 1.2 m
- b. 12 m
- c. 0.12 m
- d. 1200 m

13. What will happen if a ball is thrown upwards?

- a. It will keep going up forever.
- b. It will stop mid-air and stay there.
- c. It will fall back due to gravitational force.
- d. It will go higher due to air resistance.

14. Which of these is correct?

- a. The conversion of a liquid matter to a gas matter when heated is called deposition.
- b. The conversion of a gas matter to a liquid matter when cooled is called condensation.
- c. The conversion of a liquid to a solid state is called melting.
- d. The conversion of a solid state to a liquid state due to heat is called solidification.

15. A bird is observed catching fish and building nests near a river. What kind of bird is it likely to be?

- a. Land bird
- b. Water bird
- c. Flightless bird
- d. Carnivorous bird

16. A magnet pulls an iron nail towards it but does not affect a wooden piece nearby. Why?

- a. The magnet is weak.
- b. Magnets attract only objects made of magnetic materials like iron.
- c. The wooden piece is too heavy.
- d. Magnets only attract small objects.

17. What is sound?

- a. A type of food
- b. A form of energy that travels in waves
- c. A tool used to measure temperature
- d. A type of light

18. Kilometre is a unit of length. It can be used to measure which of the following?

- a. Distance between 2 cities
- b. Size of pen
- c. Size of bed sheet
- d. Size of ruler

19. People who fear noise have a phobia called _____.

- a. Xenophobia
- b. Acoustic phobia
- c. Claustrophobia
- d. None of these

20. Choose the odd one out.

- a. Candle
- b. Bulb
- c. Lamp
- d. Moon

21. Choose the option that is NOT correct.

- a. Force-Second
- b. Sound-Decibel
- c. Length-Metre
- d. Temperature-Degree

22. The following data shows the loudness of various sounds measured in decibels (dB):

| Sound | Loudness (dB) |
|---------------------|---------------|
| Normal conversation | 60 dB |
| Car horn | 100 dB |
| Whisper | 30 dB |

Which sound is the loudest?

- a. Normal conversation
- b. Car horn
- c. Whisper
- d. All are equally loud

23. Which of the following is an adaptation of cactus plants?

- a. Thick, fleshy stems to store water
- b. Needle-shaped leaves to reduce water loss
- c. Shallow, widespread roots to absorb water quickly
- d. All of the above

24. Which practice would most likely lead to digestive disorders?

- a. Eating fresh, cooked food
- b. Drinking water regularly
- c. Consuming large amounts of junk food
- d. Eating meals at regular intervals

25. Which of these describes acid rain?

- a. The air with the harmful gases released by vehicles, factories, industries and power plants
- b. The harmful gases released by vehicles, factories, industries and power plants in the air mixed with rainwater.
- c. Gases like carbon dioxide and methane that trap the sun's heat.
- d. None of these

26. The table below shows properties of materials:

| Material | Property |
|----------|-------------------------|
| Cotton | Soft, absorbs water |
| Plastic | Waterproof, lightweight |
| Metal | Conducts heat, strong |

Which material is best for making raincoats?

- a. Cotton
- b. Plastic
- c. Metal
- d. Glass

27. A person is pulling a cart. Which factors will affect how much force is needed?

- a. The weight of the cart
- b. The surface it is being pulled on
- c. Both a and b
- d. Neither a nor b

28. Which bird cannot fly but can swim well?

- a. Sparrow
- b. Penguin
- c. Pigeon
- d. Crow

29. Which of the following statement is NOT correct?

- a. The circulatory system helps us transport oxygen and nutrients through the blood.
- b. The respiratory system pumps the blood through blood vessels.
- c. The nervous system helps us think, feel, and sense the world around us.
- d. The digestive system helps us turn food into energy.

30. Which practice can help reduce air pollution?

- a. Using public transport or carpooling
- b. Using more plastic
- c. Burning garbage in open areas
- d. Cutting down trees

31. What should you do if someone accidentally swallows poison?

- a. Give them water to drink immediately.
- b. Make them vomit and call for medical help.
- c. Ignore it and wait for them to recover.
- d. Apply first aid to the wound.

32. Which of these shows the correct order of transformation in a butterfly's life cycle?

- a. Caterpillar → Butterfly → Egg → Pupa
- b. Egg → Caterpillar → Pupa → Butterfly
- c. Egg → Pupa → Caterpillar → Butterfly
- d. Butterfly → Caterpillar → Egg → Pupa

33. A teacher places a glass tumbler, a rubber band, and a wooden stick in water.

- The tumbler sinks.
- The rubber band floats.
- The wooden stick floats.

What does this experiment test?

- a. Whether materials are hard or soft
- b. If materials are transparent
- c. Whether materials sink or float in water
- d. If materials are flexible

34. Which of these shows the correct order of steps in water treatment?

- a. Filtration → Sedimentation → Chlorination
- b. Sedimentation → Filtration → Chlorination
- c. Chlorination → Filtration → Sedimentation
- d. Filtration → Chlorination → Sedimentation

35. Which of these is an example of bullying?

- a. Hitting, kicking, punching
- b. Saying mean and hurtful things
- c. Speaking encouraging words
- d. Both a and b

- 36. A toy car moves faster when pushed on a smooth surface but slows down quickly on a rough surface. What can you conclude from this observation?**
- Rough surfaces reduce speed due to more friction.
 - Smooth surfaces increase speed due to more friction.
 - Force is not required to move objects on rough surfaces.
 - Rough surfaces help the car move faster.
- 37. A student places three materials in the path of light: glass (transparent), paper (translucent), and metal (opaque). Which material will block the light completely?**
- Glass
 - Paper
 - Metal
 - All of them
- 38. Which food combination provides a balanced meal?**
- Bread and butter
 - Rice and dal with vegetables
 - Chips and soda
 - Fruits and water
- 39. Choose the correct option.**
- Stem-Produces seeds
 - Flowers-Perform photosynthesis
 - Leaves-Conducts water and food
 - Roots-Absorbs water and nutrients
- 40. You see a bear eating berries and then catching fish from a river. Which category does the bear belong to?**
- Herbivore
 - Carnivore
 - Omnivore
 - Insectivore



BLANK PAGE