

Grade
2

Grand Finale 2024-25

S-CAT Question Paper

NSA025

Return the answer sheet along with question paper to the invigilator at the end of the exam.



TOTAL MARKS
80



QUESTIONS
40



DURATION
60 mins

Instructions for Student:

- Read the question carefully before answering.
- Each question has 4 options (A, B, C & D).
- Choose one correct option as your answer, from the 4 options.
- Every question carries 2 marks.
- There will be an additional 0.5 Negative Marking for every wrong answer.
- On the answer sheet blacken the correct option against the corresponding question number,

The Correct Method

Q.	Answer
1	(A) (B) ● (D)

✓

The Wrong Methods

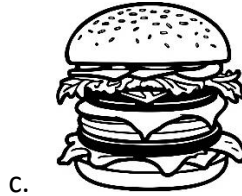
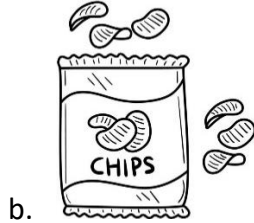
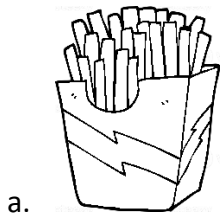
Q.	Answer
1	(A) ● ● (D)
1	(A) (B) ● (D)
1	(A) (B) ✓ (D)
1	(A) (B) ✗ (D)

✗

- Use pencil to mark your answer.
- If you wish to change your answer, erase the previous mark completely.

1. Choose the option that is NOT correct.

- a. A pigment that gives green colour to leaves-Chlorophyll
- b. A gas needed by most living things-Oxygen
- c. Part of the plant that produces nectar-Leaves
- d. Plant part that has seeds inside-Fruits

2. Choose the snack that is healthy.**3. Neetu decides to boil water for a few minutes. What is most likely to happen?**

- a. It freezes.
- b. It evaporates into water vapour.
- c. It becomes cloudy.
- d. It turns into ice.

4. Reshma's house is at a short distance from school. She cannot walk there, and buses do not run in her area. Which of these vehicles must she use?

- a. Bicycle
- b. Aeroplane
- c. Ship
- d. Train

5. Arrange the stages of the water cycle in the correct order:

- a. Evaporation → Condensation → Precipitation → Collection
- b. Condensation → Evaporation → Collection → Precipitation
- c. Collection → Evaporation → Precipitation → Condensation
- d. Evaporation → Precipitation → Condensation → Collection

6. Which of the following is NOT correctly matched?

- a. Pig-Sty
- b. Hen-Coops
- c. Cow-Shed
- d. Dog-Stable

7. Identify the type of plant shown in the image.

- a. Terrestrial plant
- b. Shrub
- c. Herb
- d. Aquatic plant

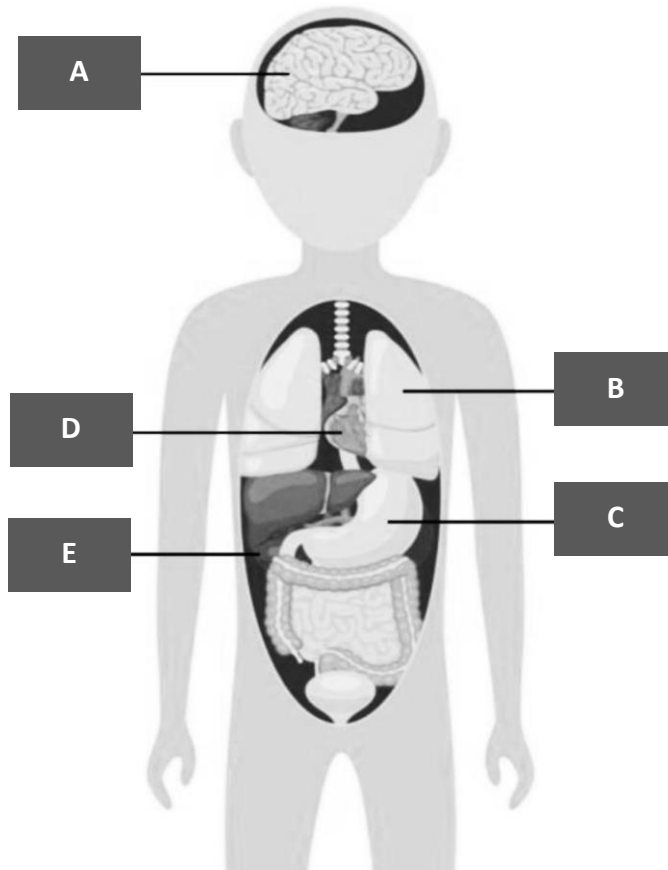
**8. Which of these does NOT lay eggs?**

- a. Fish
- b. Sparrow
- c. Dolphin
- d. Parrot

9. Which of these is NOT correctly matched?

- a. Eyes: See
- b. Ears: Hear
- c. Nose: Smell
- d. Tongue: Feel

10. Choose the option that labels the picture below.



- a. A-Stomach, B-Kidney, C-Lungs, D-Heart, E-Brain
- b. A-Brain, B-Kidney, C-Lungs, D-Heart, E- Stomach
- c. A-Brain, B-Lungs, C- Kidney, D-Heart, E- Stomach
- d. A-Brain, B-Lungs, C- Stomach, D-Heart, E- Kidney

11. Why should we brush our teeth?

- a. To taste food better
- b. To keep them clean and healthy
- c. To change their colour
- d. To make them bigger

12. Which material is used to make strong, permanent houses?

- a. Wood
- b. Iron and cement
- c. Plastic
- d. Grass

13. Which of the following statements about fish is/are correct?





Statement I: Fish breathe through their gills.

Statement II: Fish have a backbone.

Statement III: Fish lay eggs.

- a. Only I
- b. I, II, III
- c. II and III
- d. I and II

Study the graph below showing water usage at home and answer questions 14 & 15.

ACTIVITY	IMAGES	USAGE
Bathing		40%
Gardening		20%
Cleaning		30%
Brushing		10%

14. Which activity uses the most amount of water?

- a. Bathing
- b. Brushing
- c. Cleaning
- d. Gardening

15. Which activity uses the least amount of water?

- a. Bathing
- b. Gardening
- c. Cleaning
- d. Brushing

16. Neha placed a burning candle under a glass. What happens to the candle?

- a. It burns brighter.
- b. It goes out.
- c. It makes more smoke.
- d. It melts.

17. What is the natural satellite of Earth?

- a. Sun
- b. Moon
- c. Mars
- d. None

18. You want to cross the road, and the traffic signal shows green for vehicles. What should you do?

- a. Cross the road.
- b. Walk on the footpath.
- c. Wait for the signal to turn red.
- d. Go back home.

19. A construction site near Meetu's house is very noisy. What can she do?

- a. Close the windows.
- b. Shout at the workers.
- c. Move to a new house.
- d. Play louder music.

20. Sit quietly and take deep breaths for 5 minutes. What do you feel?

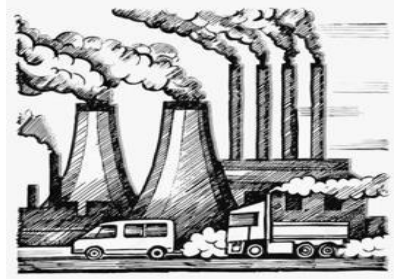
- a. More relaxed
- b. More stressed
- c. Irritated
- d. Angry

21. Which of the following is NOT correct?

- a. Put all types of waste in one dustbin or throw them on the street.
- b. Dust your house regularly.
- c. Keep your things in their proper place.
- d. Always keep your toilets and bathrooms clean.

22. Look at the picture. What does it show?

- a. Clean environment
- b. Air and noise pollution
- c. A quiet area
- d. A forest



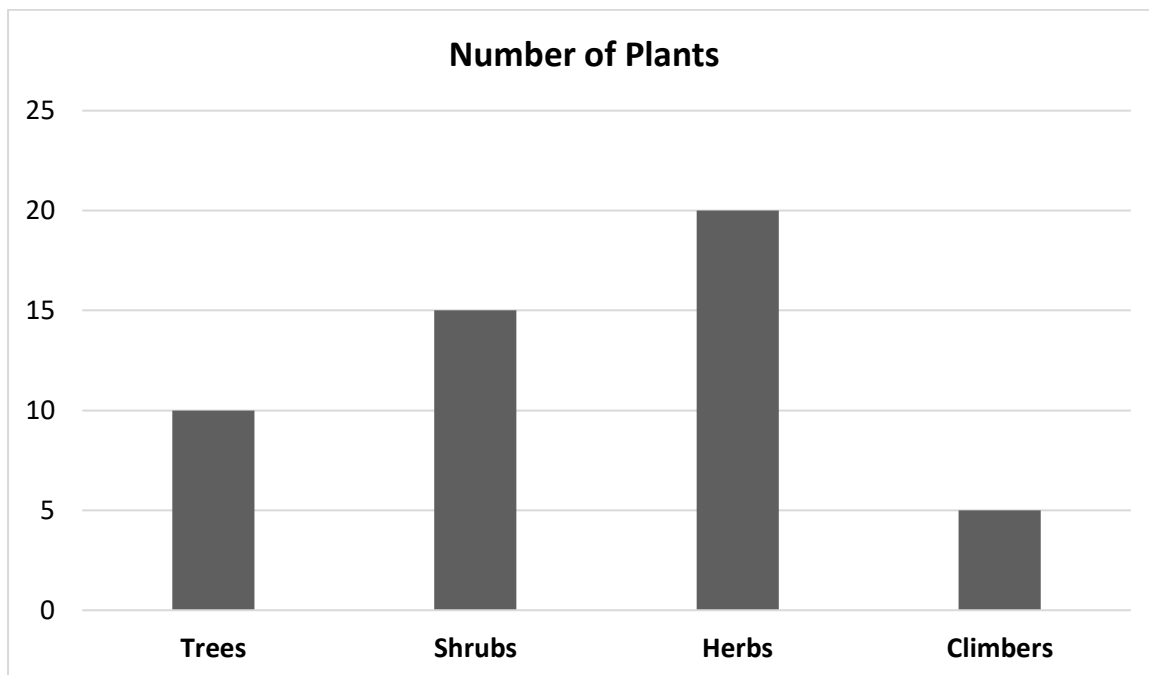
23. Which of these options defines hygiene?

- a. Taking care of yourself to stay healthy and clean
- b. Only eating healthy food
- c. Playing games daily
- d. Watching TV every day

24. Which of these is used in pencil?

- a. Coal
- b. Oil
- c. Quartz
- d. Graphite

Study the chart below and answer questions 25 & 26.



25. What is the most common type of plant in the garden?

- a. Trees
- b. Shrubs
- c. Herbs
- d. Climbers

26. What is the least common type of plant in the garden?

- a. Trees
- b. Shrubs
- c. Herbs
- d. Climbers

27. Choose the odd one out.

- a. Chess
- b. Cricket
- c. Carrom
- d. Video games

28. Arya sees her friend coughing without covering his mouth. What should Arya do?

- a. Tell him politely to cover his mouth.
- b. Cough back at him.
- c. Ignore him.
- d. Run away.

29. Which of these is NOT correctly matched?

- a. Bat: Cricket
- b. Racket: Badminton
- c. Dice: Ludo
- d. Shuttlecock: Table Tennis

30. You pour water on a piece of chalk and see that it breaks into small pieces. What does this show?

- a. Rocks are unbreakable.
- b. Some rocks can break down easily.
- c. Water makes rocks grow.
- d. Rocks are made of rubber.

31. Given below are three statements about the Sun. Which of these is/are correct?

Statement I: The Sun is like a ball of gases that is present at the centre of the solar system.

Statement II: When the Earth is far from the Sun, we experience summers; when it is close to the Sun, we experience winters.

Statement III: The sun is the ultimate source of energy on which all the living beings on the earth depend.

- a. Only I
- b. I and III
- c. II and III
- d. I and II

32. What are rocks made of?

- a. Metals
- b. Sand and water
- c. Minerals
- d. Plants

33. Mini finds broken glass on the floor. What should she do?

- a. Play with it.
- b. Pick it up with bare hands.
- c. Call an adult for help.
- d. Step on it carefully.

34. Which of these is a part of a plant that we can eat?

- a. Leaf (Spinach)
- b. Stem (Sugarcane)
- c. Root (Carrot)
- d. All of the above

35. Choose the example of bad touch.

- a. A friend's handshake
- b. Mom's hug and kiss
- c. Teacher's pat on your shoulder
- d. A stranger's touch on your bottom

36. Look at the picture. Where would you find this house?

- a. Kerala
- b. Rajasthan
- c. Maharashtra
- d. Manali



37. Riya planted trees near her house. How does this help the air?

- a. It makes the air dirtier.
- b. It absorbs harmful gases and produces oxygen.
- c. It stops rain.
- d. It increases smoke from vehicles.

38. What is the process by which water vapour changes to water?

- a. Condensation
- b. Evaporation
- c. Precipitation
- d. Collection

39. What is an example of mass communication?

- a. Talking on the phone
- b. Watching the news on TV
- c. Writing a letter
- d. Making a video call

40. Nita is feeling weak and tired. Which type of food will give her quick energy?

- a. Bread and rice
- b. Green leafy vegetables
- c. Butter and cheese
- d. Eggs and milk

